



Stormwater Permit Program for Construction Activities



QUICK-COMPLIANCE TIPS NPDES TRANSFER REQUIREMENTS FOR BUILDERS

Attention Builders

You must complete three requirements before transferring property to homeowners.

When putting the final touches on a residential lot, do not forget to complete your stormwater requirements.

In Minnesota, prior to transferring a building lot to the homeowner, the Minnesota Pollution Control Agency requires the builder to distribute the homeowner factsheet, provide temporary or permanent erosion control for exposed soils and install perimeter sediment control down gradient until vegetative cover is established.



Requirement #1 Stabilize All Exposed Soils

Permanent or temporary stabilization is required before building lots can be transferred to the homeowner. Erosion control BMPs include (but are not limited to) vegetation, sod, straw mulch, compost, hydromulch and erosion control blanket.



Vegetation



Sod



Mulch and Seed



Compost



Hydromulch



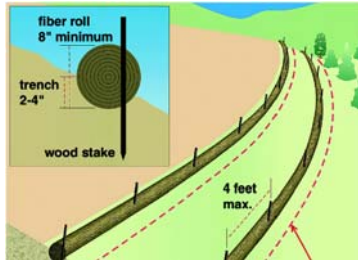
Erosion Control Blanket

Requirement #2 Provide Perimeter Sediment Control

Perimeter sediment control must be established down gradient if building lots are transferred to the home owner before permanent vegetation is established. Practices such as silt fence, fiber logs or compost berms (to name a few) must be in place down hill from the home to ensure that sediment does not discharge off site.



Silt Fence



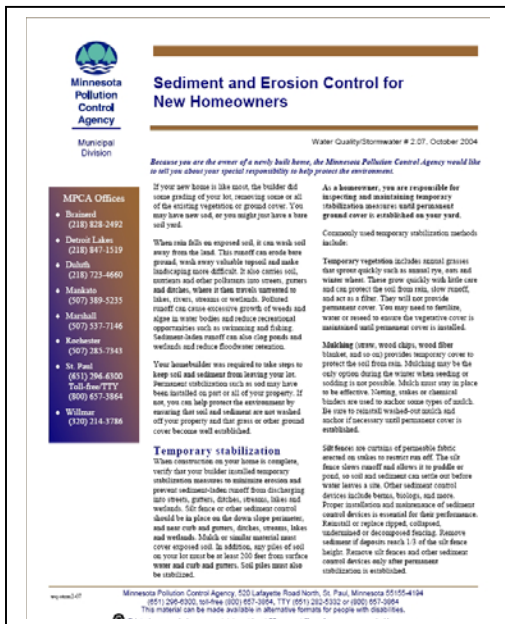
Fiber Logs



Compost Berms

Requirement #3 Distribute the Home Owner Factsheet

The MPCA requires that the builder distribute the MPCA's "homeowner factsheet" to the homeowner to inform the homeowner of the need for, and benefits of, final stabilization.



This fact sheet is available at the MPCA's Stormwater Program for Construction Activities website:

<http://www.pca.state.mn.us/water/stormwater/stormwater-c.html>

Contact Dakota County SWCD if you have questions

If you have any questions regarding the NPDES Construction Stormwater Permit program or requirements please contact the Dakota County Soil and Water Conservation District at 651-480-7777 or mike.isensee@co.dakota.mn.us

Dakota County Soil and Water Conservation District

4100 220th Street West, Suite 102 • Farmington, MN 55024 • (651) 480-7777 • www.dakotacountyswcd.org