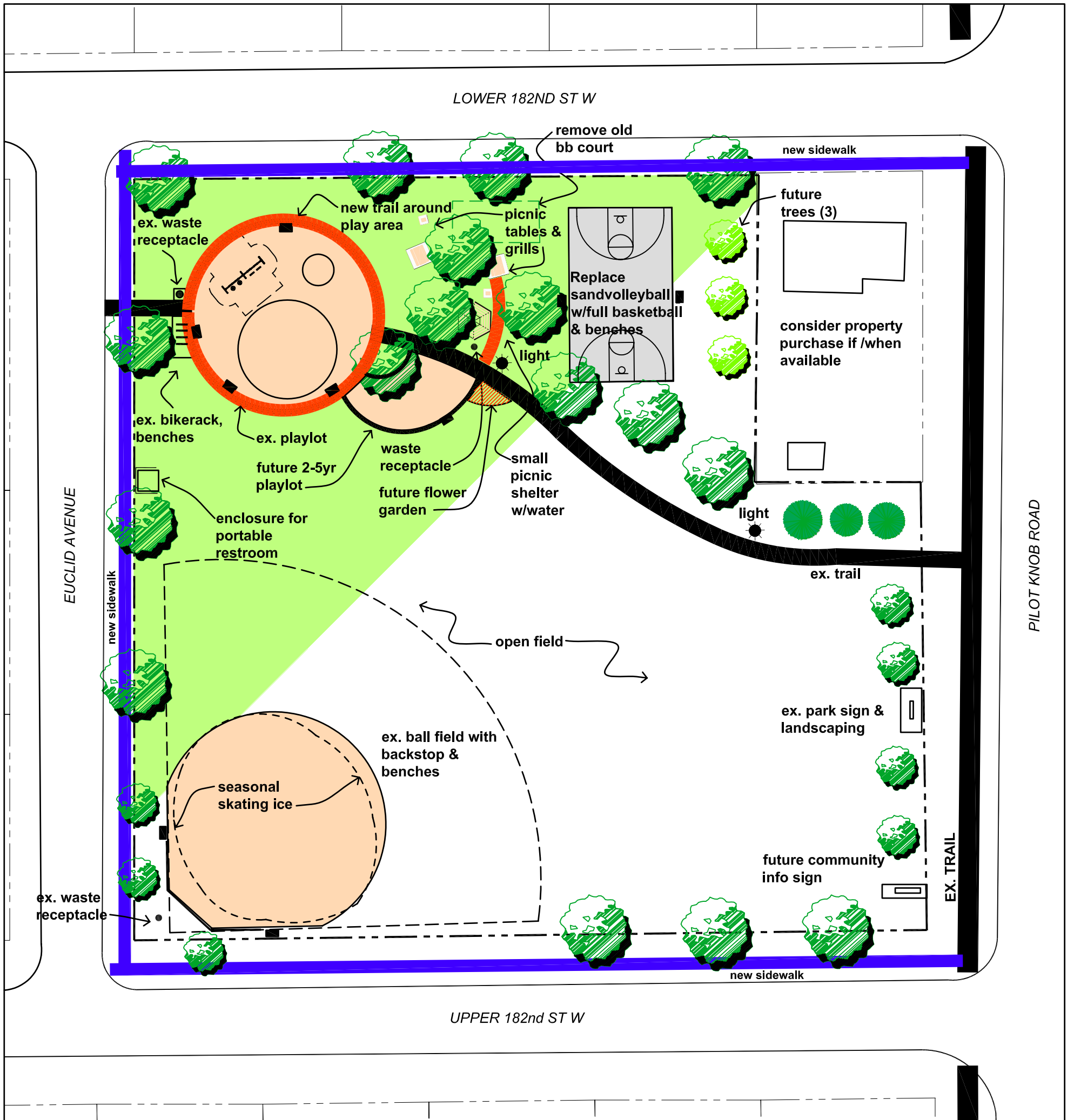


HILL DEE PARK



Existing features:

- Paved trail from Pilot Knob Rd
- Ball field with backstop
- Picnic benches and grill
- Small basketball court and net
- Sand volleyball court
- Play equipment (swings, structure for 6-12yr olds)
- Park sign
- Waste receptacles

Suggested future additional features:

- Paved trail to picnic area
- Play area for 2-5yr olds with bench
- Sidewalk at Upper & Lower 182rd & Euclid Ave
- Picnic shelter with water and light
- Picnic benches(2) and grills (2)
- Full basketball court
- Eliminate sand volleyball court
- Seasonal ice skating
- Enclosure for portable restroom
- Trail lights
- Tree plantings
- flower garden

KEY

- - - - - park boundary
- existing paved trail
- proposed park trail
- proposed sidewalk
- existing trees
- new trees
- bench
- waste receptacle
- picnic shelter, table, grill
- light

FUTURE POSSIBILITIES

2.9 ACRES

Hill Dee Park - Draft Master Plan Farmington, Minnesota

ADOPTED MARCH 7, 2005

NOTE: THIS MAP IS CONCEPTUAL ONLY AND REPRESENTS ONLY APPROXIMATE LOCATIONS OF PROPERTIES AND FACILITIES.

